



Social Enterprise Business Centre (SEBC) compiles the Social Enterprise Directory (SE Directory) every year since 2007.

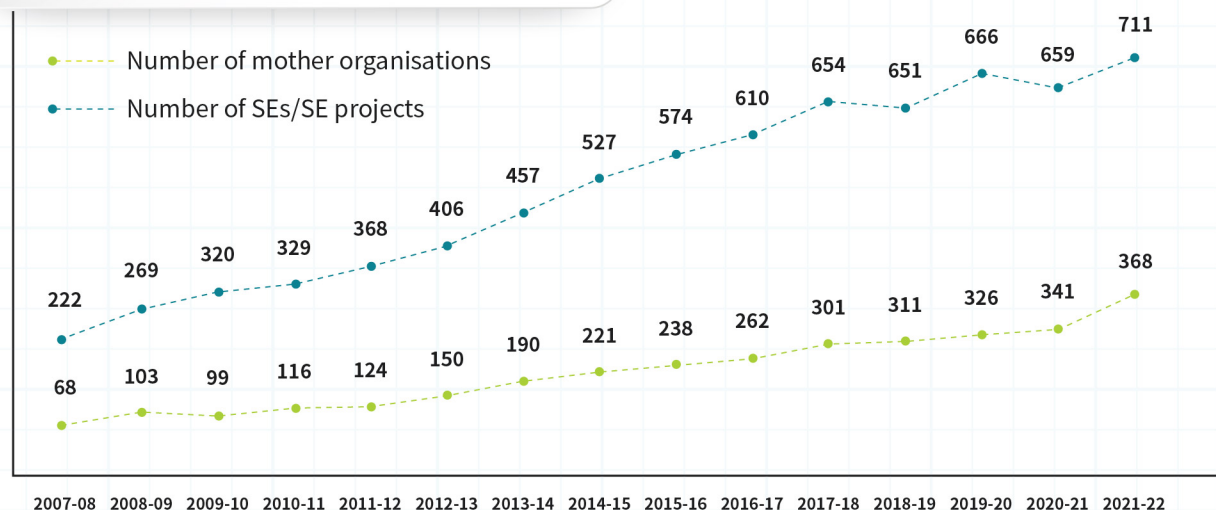


SE Directory has long been serving as an important reference material for advocating responsible consumption across government departments, public organisations, NGOs, corporations as well as schools.

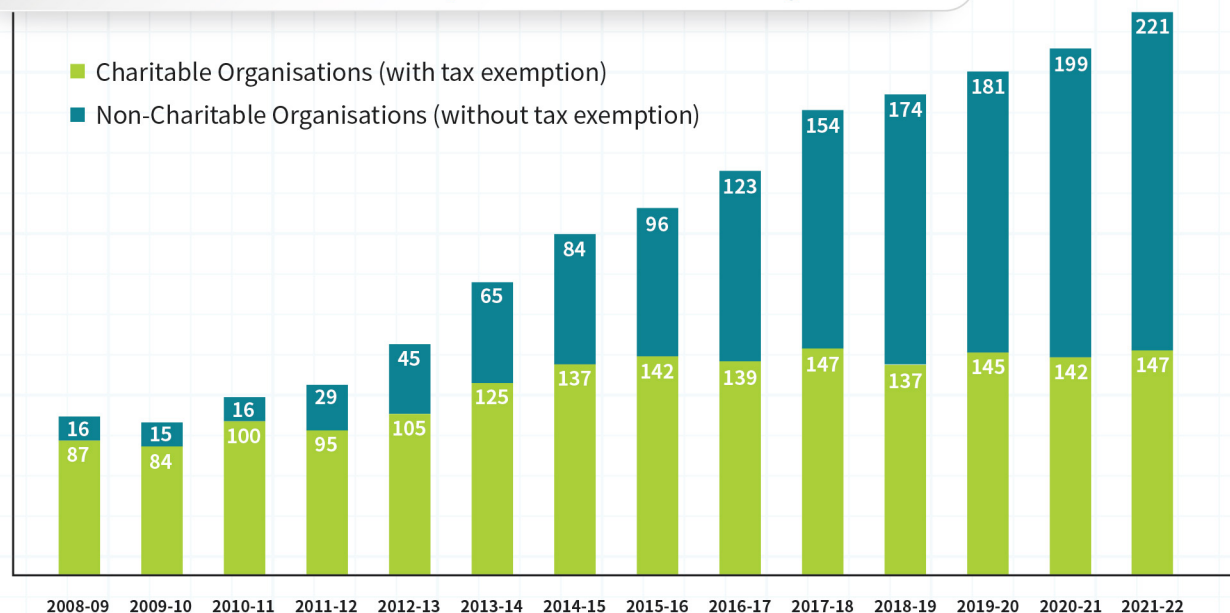


As of April of 2022, there were 711 social enterprise (SE) units, reflecting a 7.9% increase from the previous year.

Number of SEs/SE projects over the years

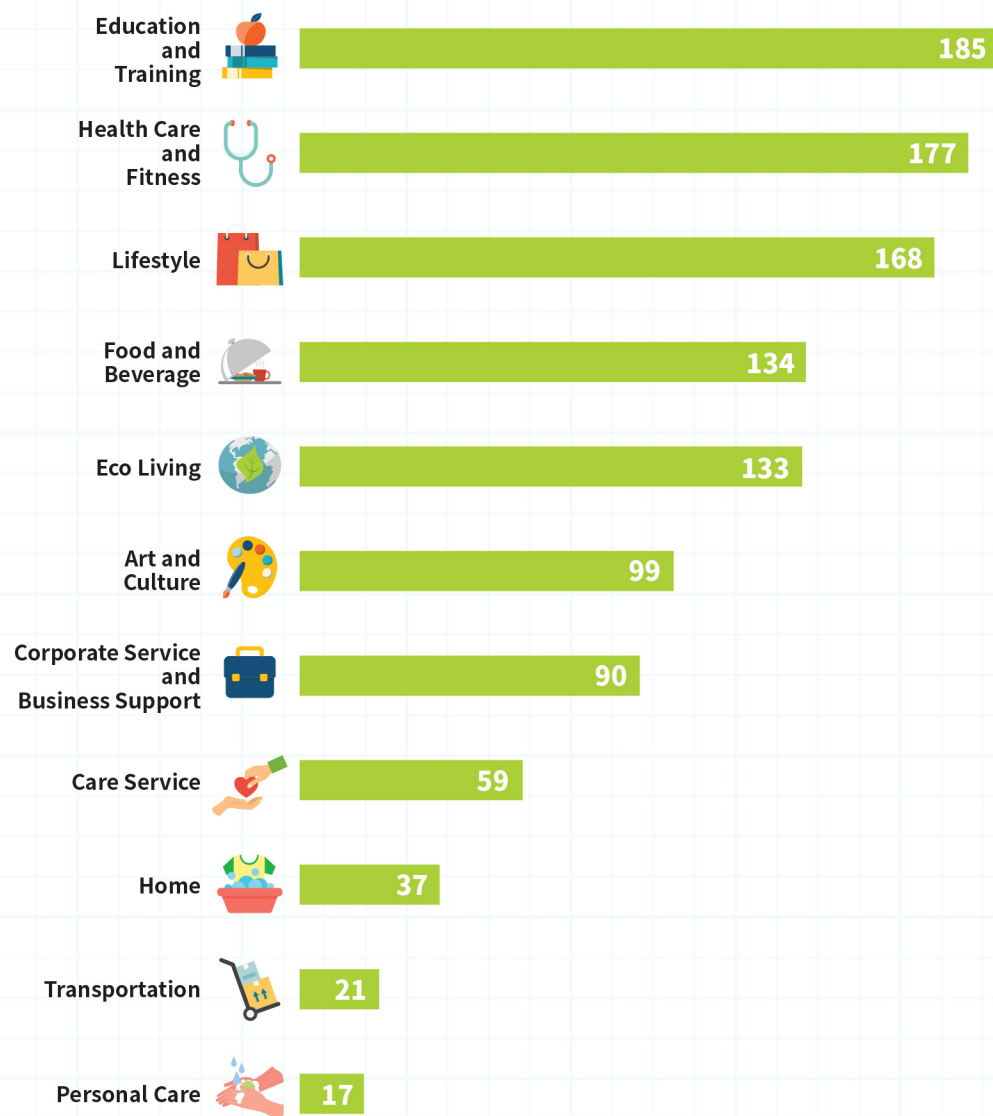


Charitable Status and Tax Exemption of SEs' Mother Organisations



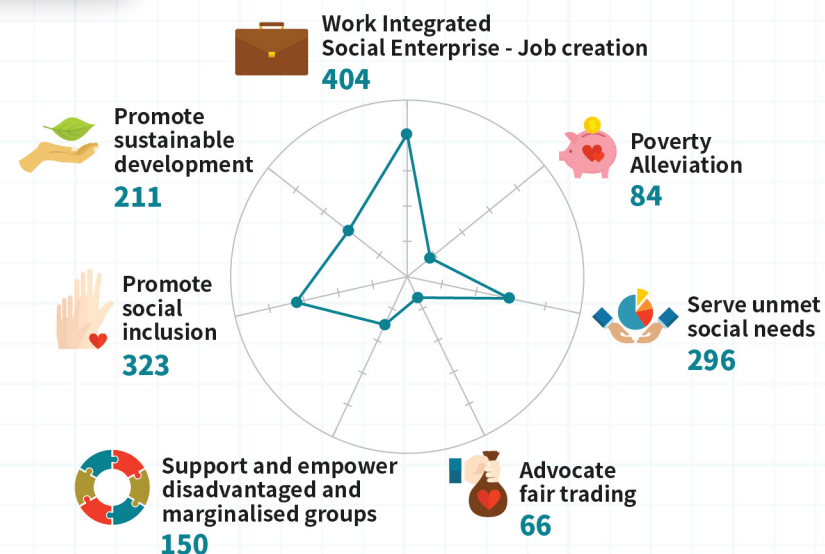
Industrial Distribution of SE Units

* Some SE/ SE projects may belong to more than one industry



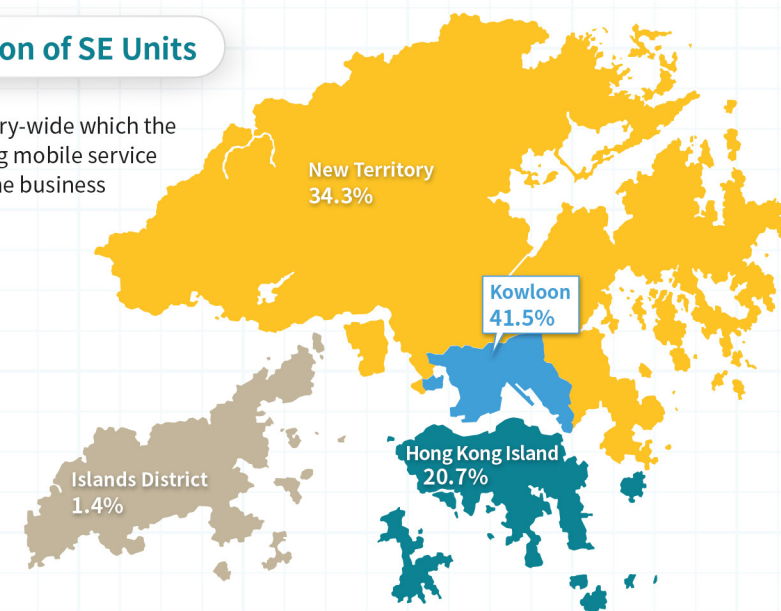
Social Mission

* Some SE/SE projects may have more than one social mission

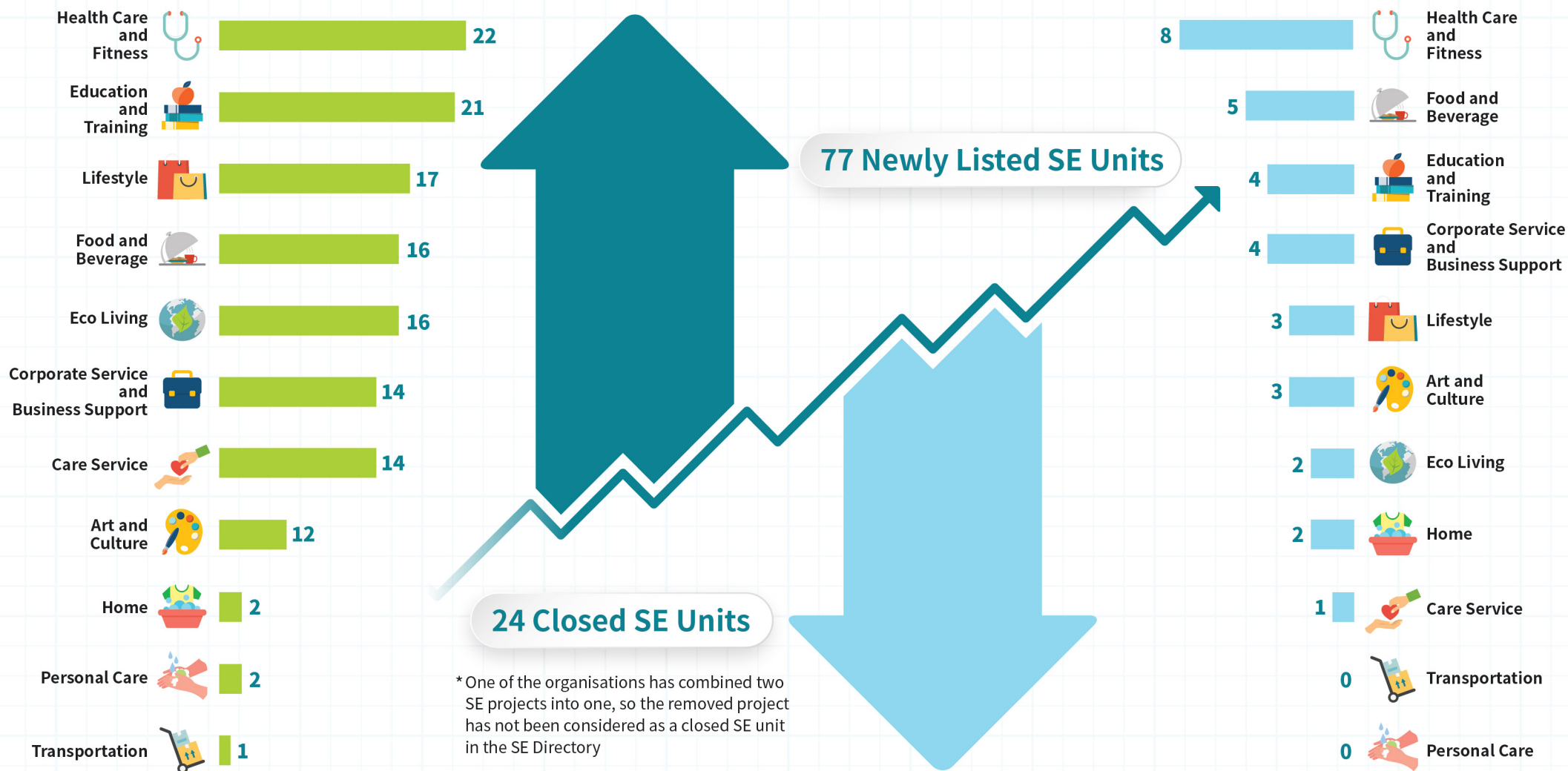


Local Distribution of SE Units

* 2.1% refers to Territory-wide which the SE units are providing mobile service and conducting online business



*Some SEs/SE projects may belong to more than one industry



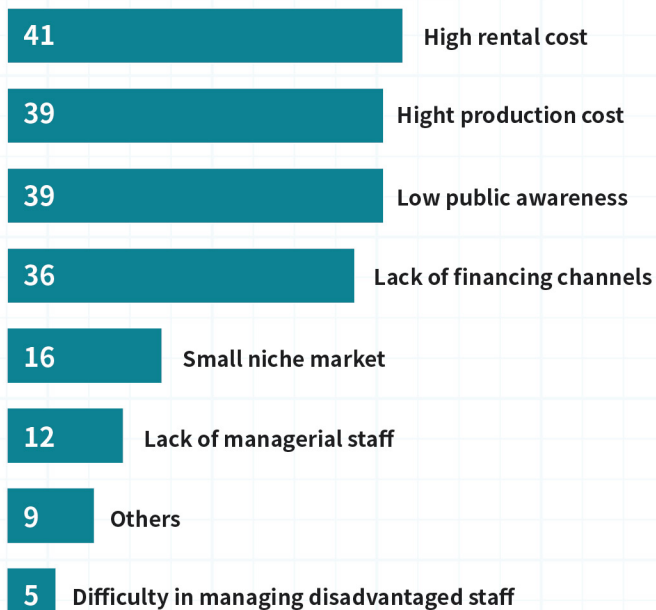
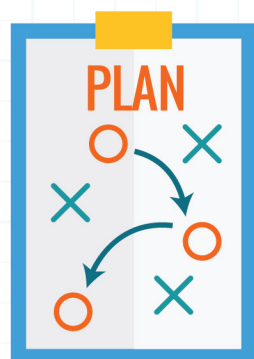
Funding Source of Newly Listed SE Units

* Some SEs/ SE projects may have more than one funding source



Common Operational Obstacles of Newly Listed SE Units

* Some SEs/ SE projects may select more than one option



The Most Helpful Measures for Newly Listed SE Units

* Some SEs/ SE projects may select more than one option

